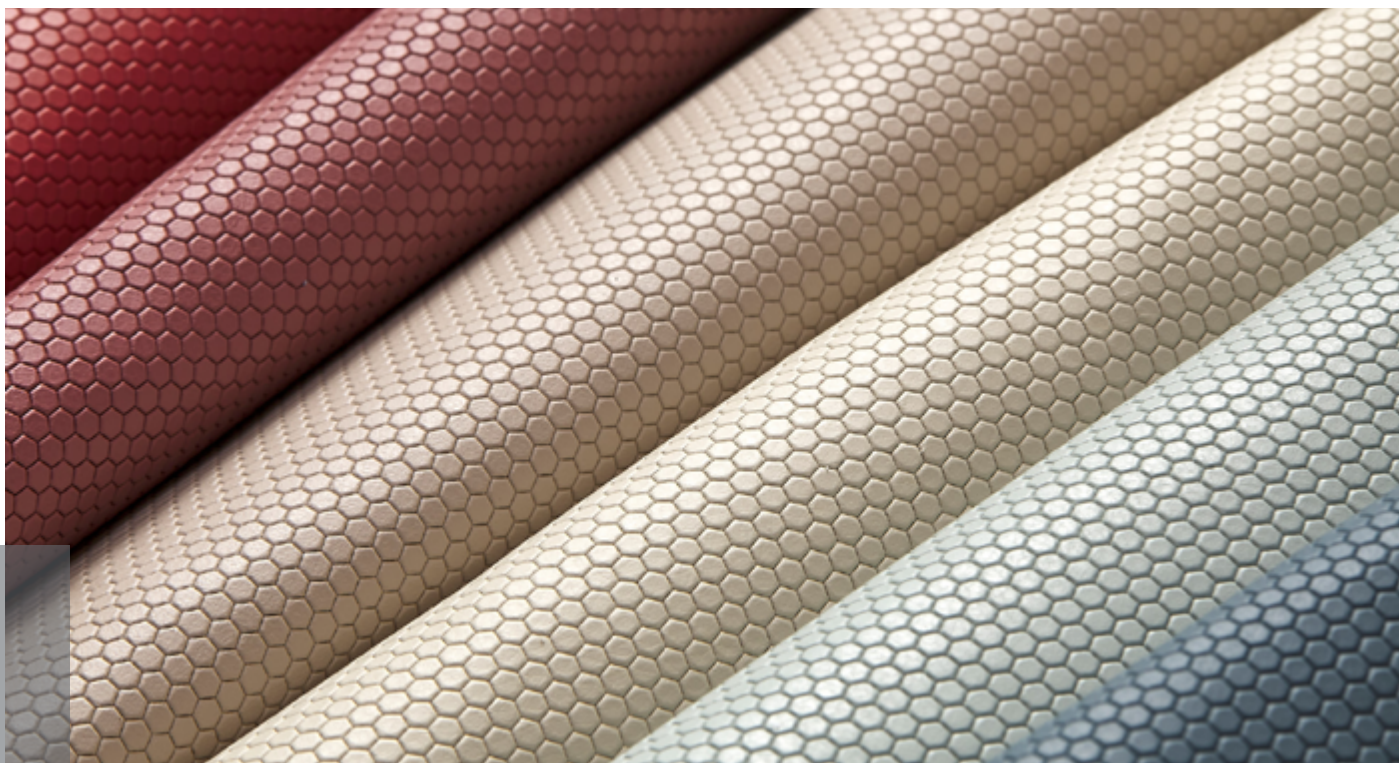


QUEEN BEE COLLECTION



Queen Bee evoca la geometria dell'alveare: regolare, sobria e misteriosamente intrigante.

Stampata su City, questa pelle è adatta a decorare tutti gli ambienti, dai più semplici ai più sofisticati. È una collezione caratterizzata da colore intensi e ricercati effetti geometrici che arricchiscono con stile i rivestimenti in pelle.

Queen bee recalls the beehive's geometry: complete, plain, and inexplicably intriguing. It is embossed on City, which makes it suitable for the decoration of all kinds of interiors, from the simple to the more sophisticated ones. Queen bee is an extremely refined collection characterised by dense colours and geometrical effects to decorate interiors with style.

SPECIFICHE TECNICHE / SPECIFICATIONS

Origine / Origin

Pelli fresche di origine europea, conciate e lavorate con processi sostenibili in rispetto dell'ambiente / *Raw hides of European origin, tanned and processed with sustainable processes in respect of the environment.*

Finitura / Finish

Mezzo fiore uniformato / *Corrected grain*

Dimensione / Size

60x120 cm / 23.6"x47.2"

Spessore / Thickness:

0,9 / 1,0 mm

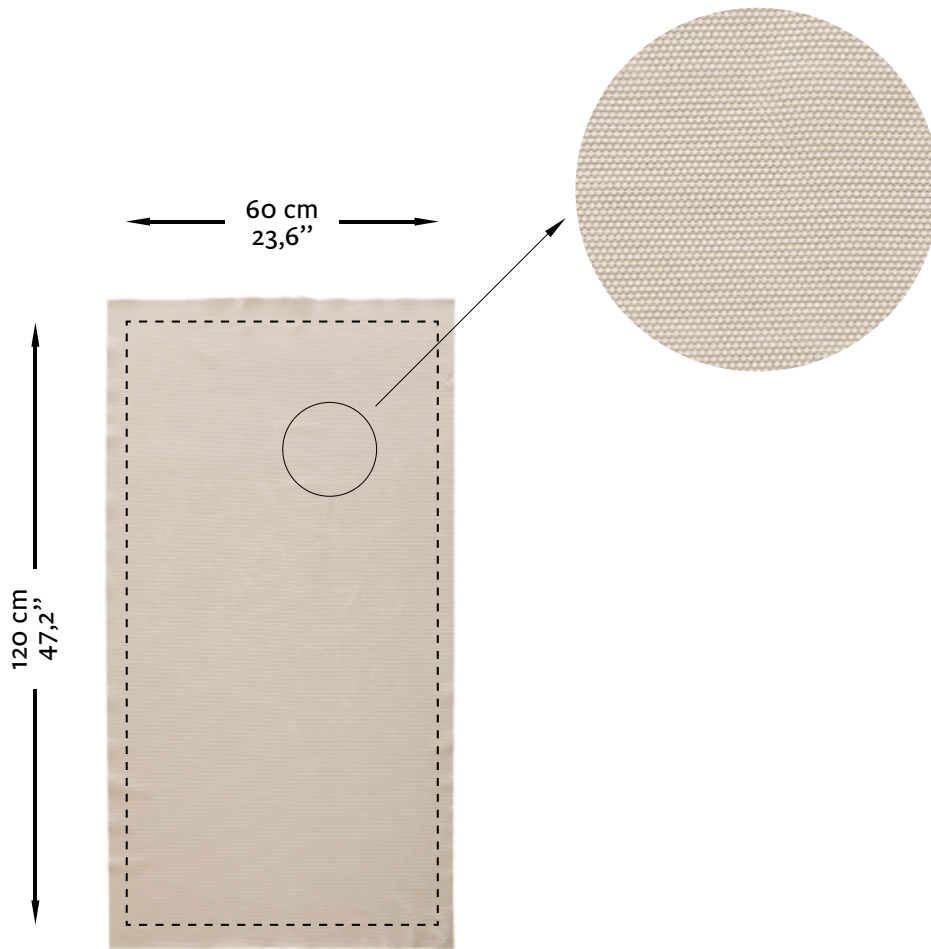
Applicazioni / Applications

residenziale, hospitality, contract, aviazione, navale / *residential, hospitality, contract, aviation, marine.*

studioart

LEATHER INTERIORS
www.studioart.it
MADE IN ITALY

Esempio di pannello pretagliato
Example of pre-cut panel



CARATTERISTICHE TIPICHE DELLE PELLI / TYPICAL CHARACTERISTICS OF THE LEATHERS

- Spinatura / Scar
- Grana non uniforme / *non-uniform grain*
- Morso d' insetto / *Insect Bite*

CARTELLA COLORI

COLOUR PALETTE



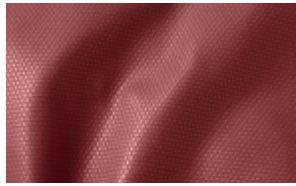
greige



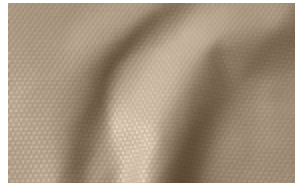
grisrose



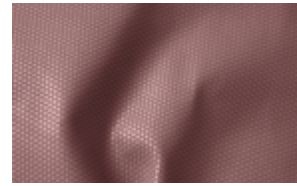
fard



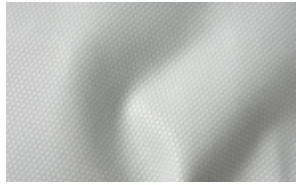
lipstick



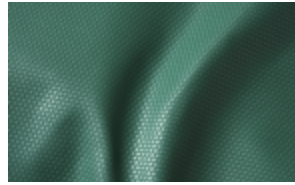
marmo



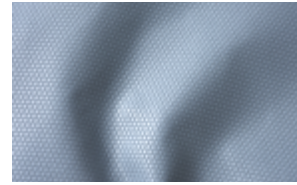
panama



cielo



scarabeo



boeing