

POLIS COLLECTION



Polis deriva da un'accurata selezione di pelli bovine pieno fiore trattate per ottenere una pelle dall'aspetto omogeneo e levigato. Tinte con coloranti all'anilina e lavorate con un particolare trattamento che sfrutta pressione e calore, le pelli presentano straordinaria elasticità, una finitura liscia e un leggero effetto di chiaroscuro che ne accentua la trasparenza. Grazie alle elevate qualità tecniche, Polis è adatta a una grande varietà di interni e alle applicazioni che aspirano a funzionalità ed eleganza.

Polis is made from carefully selected full-grain cowhides that have been finished to create an ultra-smooth texture. Exceptionally supple, this aniline-dyed leather undergoes a special ironing process that results in a beautiful, yet functional, silky finish, which is characterised by a slight two-tone effect that enhances the leather's transparency. Its technical qualities make Polis a great choice for a wide range of interiors.

SPECIFICHE TECNICHE / SPECIFICATIONS

Origine / Origin

Pelli di origine europea, conciate e lavorate con processi sostenibili in rispetto dell'ambiente / Hides of European origin, tanned and processed with sustainable processes in respect of the environment.

Finitura / Finish

Semi Anilina / Semi Aniline

Dimensione / Size

± 4,8 m² ± 51 sq. ft.

Spessore / Thickness:

1,2 / 1,4 mm

Applicazioni / Applications

residenziale, hospitality, contract, aviazione, navale / residential, hospitality, contract, aviation, marine.

studioart

LEATHER INTERIORS
www.studioart.it
MADE IN ITALY

Certificazioni / *Certifications*

| Test | Metodo di prova <i>Test Method</i> | Unità di misura <i>Measurement unit</i> | Risultato <i>Result</i> |
|--|---------------------------------------|--|----------------------------------|
| Resistenza alla trazione <i>Tear Strength</i> | UNI EN ISO 3377-1 | N | ≥ 20 |
| Solidità del colore allo strofinio-Secco 500 cicli <i>Colour fastness to rubbing-Dry 500 Cycles</i> | UNI EN ISO 11640: 1998 | Scala di grigi <i>Grey Scale</i> | ≥ 4 |
| Solidità del colore allo strofinio-Umido 250 cicli <i>Colour fastness to rubbing-Wet 250 Cycles</i> | UNI EN ISO 11640: 1998 | Scala di grigi <i>Grey Scale</i> | ≥ 4 |
| Resistenza alle flessioni-secco 50.000 cicli <i>Flexing endurance-Dry 50.000 Cycles</i> | UNI EN ISO 5402 | / | Nessun danno <i>No damage</i> |

Altre certificazioni per ignifugo, aviazione e nautica disponibili su richiesta.
Other FR, aviation and marine certifications available upon request.

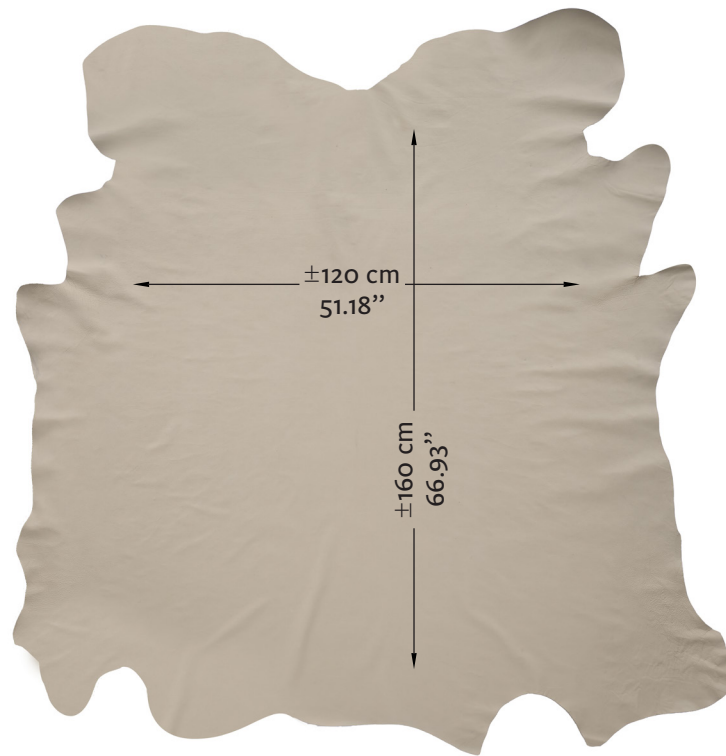
CURA E MANUTENZIONE

A differenza delle Aniline, queste pelli vengono rifinite con un leggero colorante protettivo, che garantisce una resistenza maggiore a macchie e usura. Pur essendo più resistente, si consigliano gli stessi accorgimenti dell'anilina.

CARE AND MAINTENANCE

Differently from pure anilines, these leathers are finished with a light protective color that guarantees more resistance to stain and use. However, we recommend the same care and maintenance of anilines.

Esempio di area utilizzabile in una pelle
Example of usable area

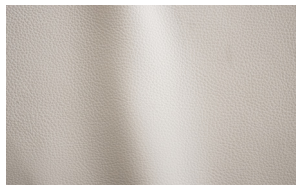


CARATTERISTICHE TIPICHE DELLE PELLI / TYPICAL CHARACTERISTICS OF THE LEATHERS

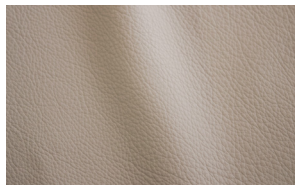
- Grana naturale / *natural grain*
- Leggero doppio tono / *light double tone*

CARTELLA COLORI

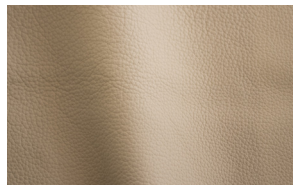
COLOUR PALETTE



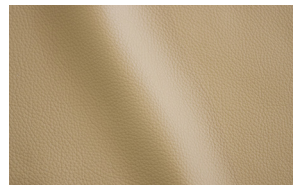
ottico



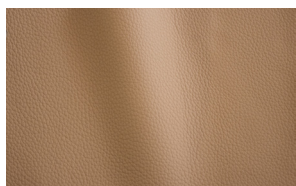
edelweiss



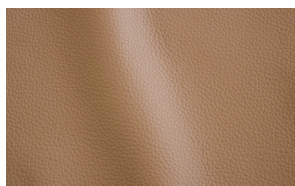
burro



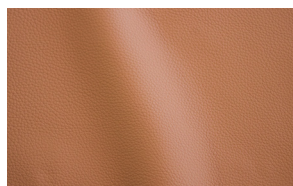
geyser



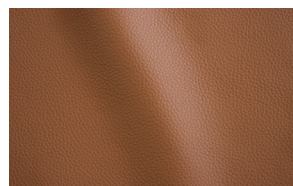
mokaccino



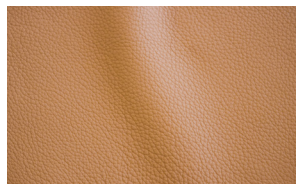
noce



nudo



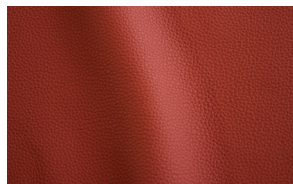
walnut



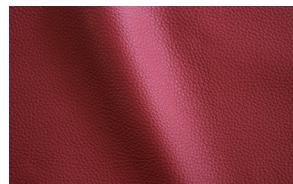
albicocca



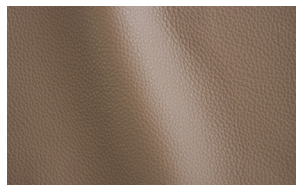
paprika



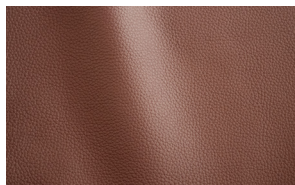
lipstick



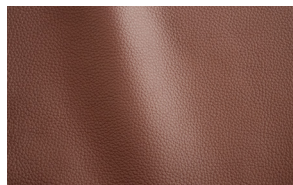
bordeaux



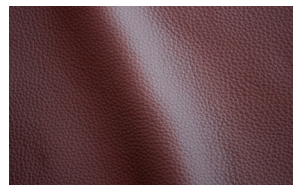
malto



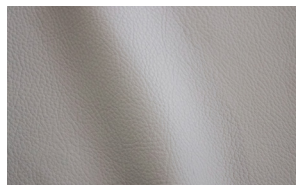
bentley



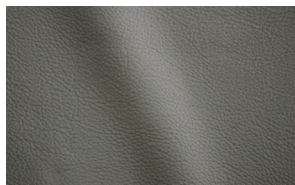
taupe



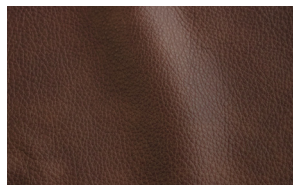
ox blood



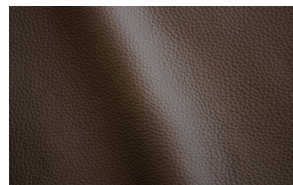
nuvola



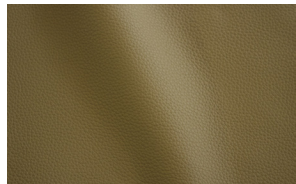
atmosfera



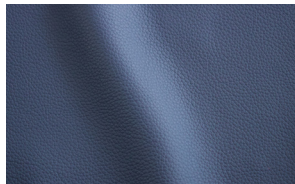
moka



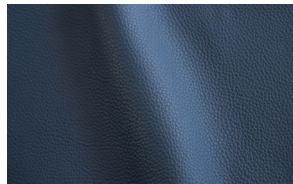
ebano



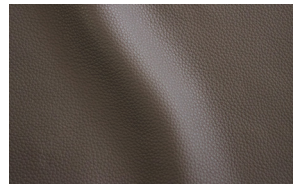
muschio



jeans



infinito



voronof