

NOTCH COLLECTION



Questa collezione combina estetica e performance, presentando la pelle sotto una diversa prospettiva ed enfatizzando ulteriormente le caratteristiche tecniche della pelle outdoor. Notch presenta una piacevole texture garantendo elevate performance, come una maggiore traspirabilità e un effetto antiscivolo.

This collection combines aesthetic and performance, presenting leather under a new perspective and enhancing the typical characteristic of an outdoor leather. Notch shows a pleasant texture while guaranteeing great technical performances, such as high breathability and slip-resistance.

SPECIFICHE TECNICHE / SPECIFICATIONS

Origine / Origin

Pellame Bovino di Origine Europea /
Bovine Leather of European Origin

Finitura / Finish

Pieno Fiore Pigmentato idro repellente /
Water-resistant Pigmented Full Grain

Dimensione / Size

60x120 cm / 23.6"x47.2"

Spessore / Thickness:

0,9 / 1,0 mm

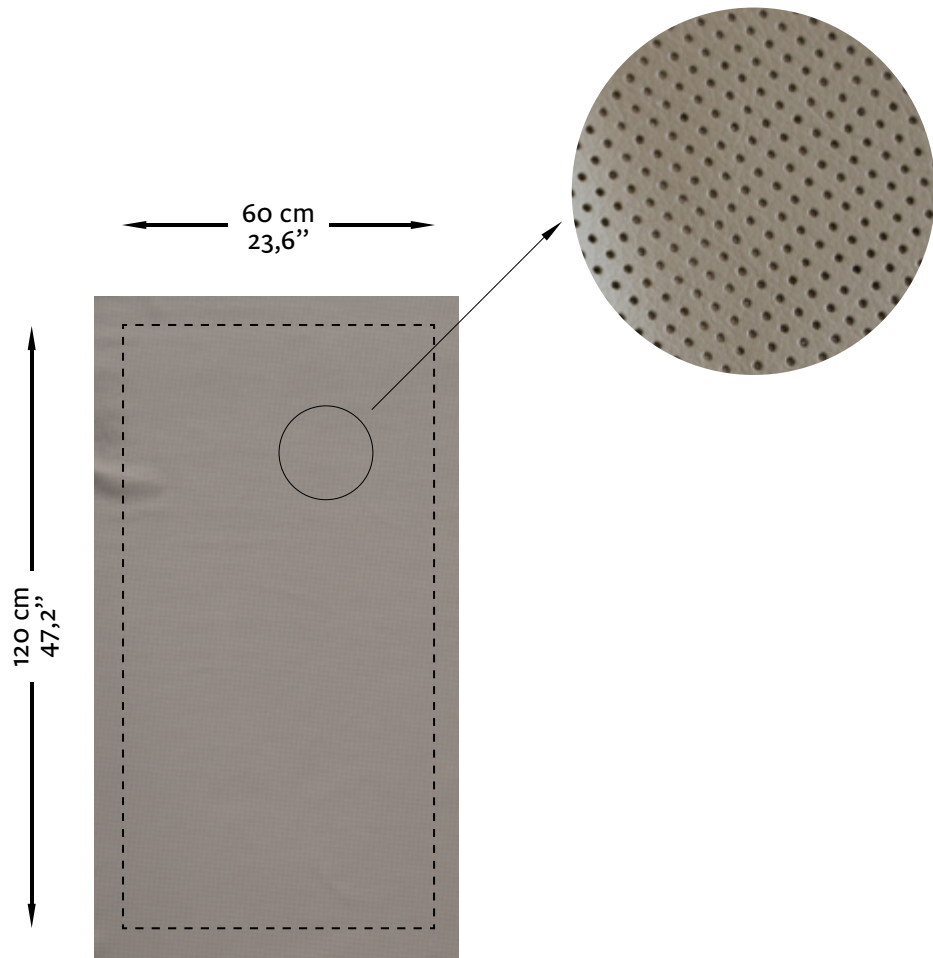
Applicazioni / Applications

residenziale, hospitality, contract, navale /
residential, hospitality, contract, marine.

studioart

LEATHER INTERIORS
www.studioart.it
MADE IN ITALY

Esempio di pannello pretagliato
Example of pre-cut panel



CARTELLA COLORI

COLOUR PALETTE



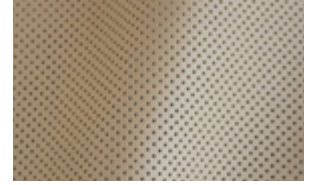
shell



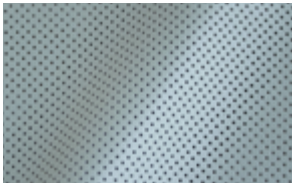
sand stone



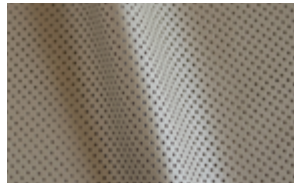
polvere



cachemire



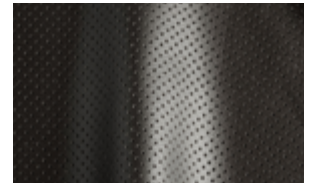
cielo



storm



iceberg



black