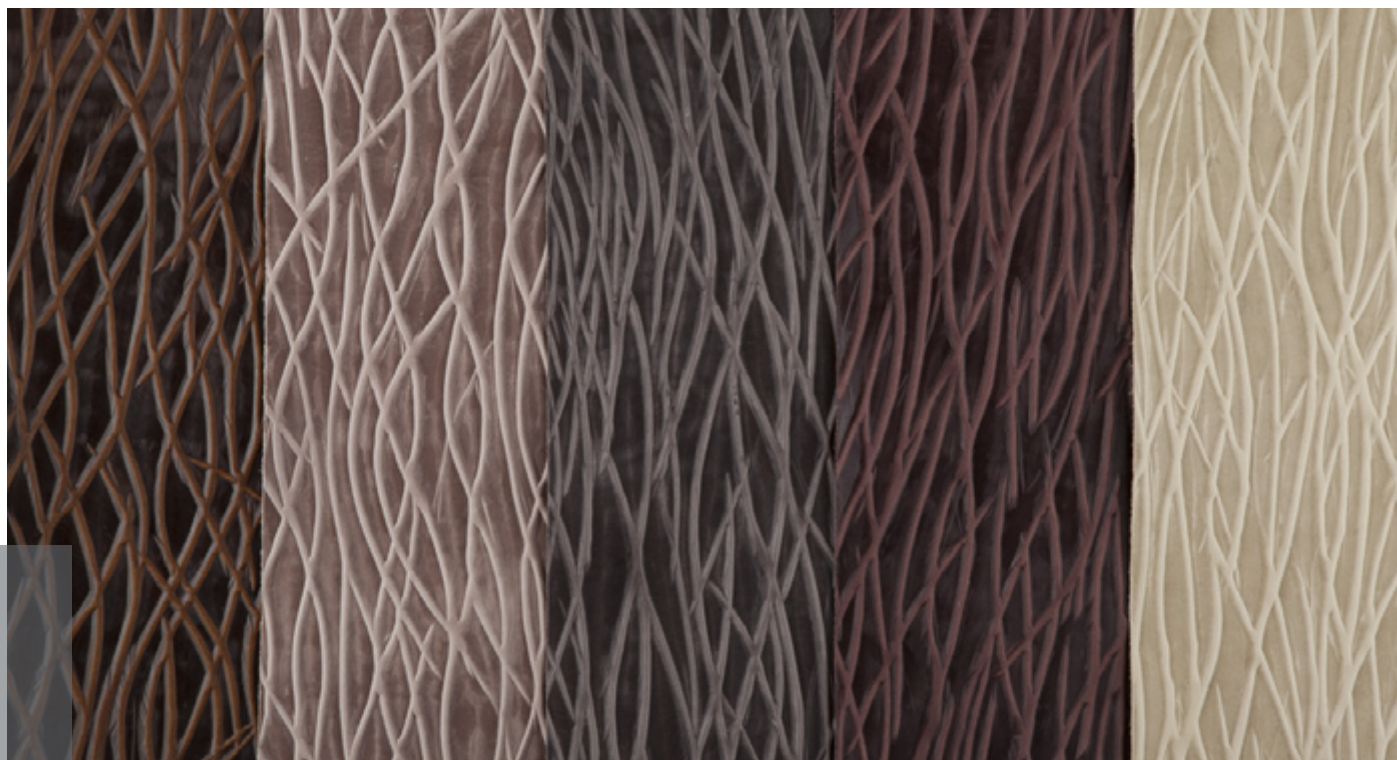


KATANA COLLECTION



La stampa in rilievo di Katana è esaltata da sottilissimi graffi sulla superficie che donano un delicato effetto vissuto alla pelle e gli elementi in rilievo ricordano i tagli di una lama. Katana è ottenuta attraverso una particolare lavorazione della pelle ed è stampata su Natural, pelle nobile e pregiata rifinita con cere e olii che conferiscono un delicato effetto invecchiato.

The embossed pattern that recalls sword incisions is enhanced by thin scratches on the surface adding a delicate vintage look to leather. Katana is obtained thanks to a particular leather processing technique. Katana is embossed on Natural, a noble full-grain leather treated with waxes and oils to obtain a refined aged look.

SPECIFICHE TECNICHE / SPECIFICATIONS

Origine / Origin

Pelli fresche di origine europea, conciate e lavorate con processi sostenibili in rispetto dell'ambiente / Raw hides of European origin, tanned and processed with sustainable processes in respect of the environment.

Finitura / Finish

Anilina Cerata / Waxy Aniline

Dimensione / Size

60x120 cm / 23.6"x47.2"

Spessore / Thickness:

0,9 / 1,0 mm

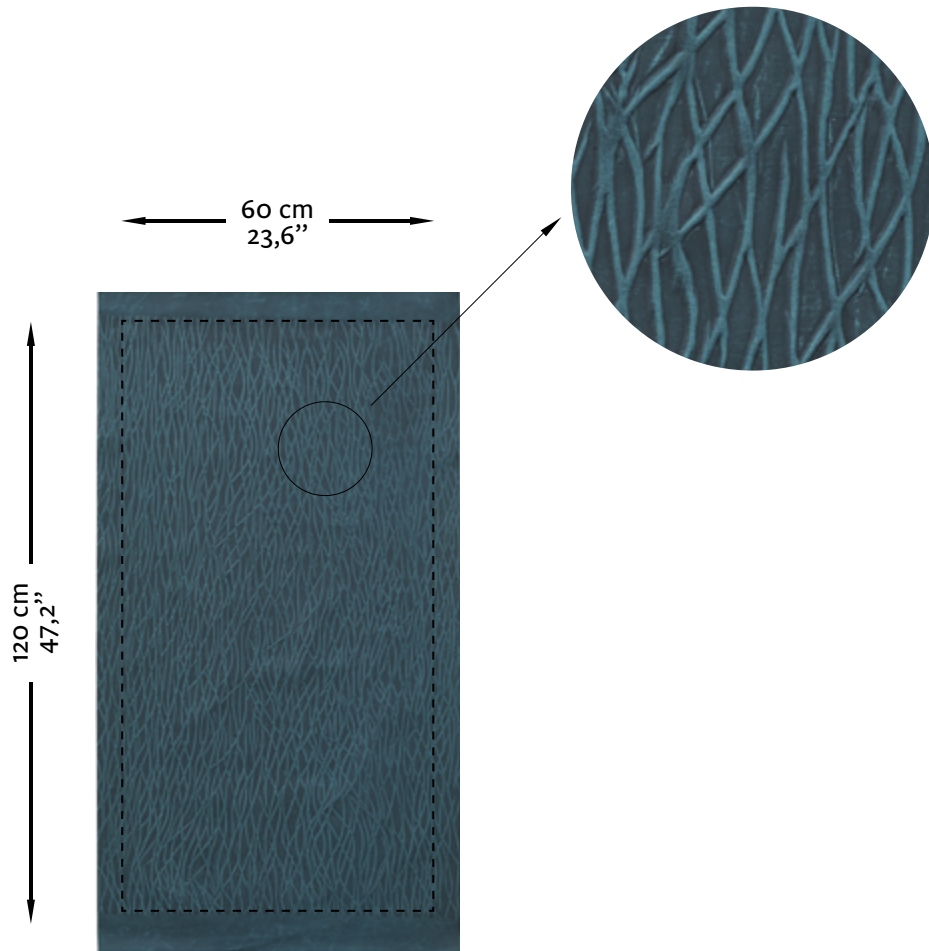
Applicazioni / Applications

residenziale, hospitality, contract, aviazione, navale / residential, hospitality, contract, aviation, marine.

studioart

LEATHER INTERIORS
www.studioart.it
MADE IN ITALY

Esempio di pannello pretagliato
Example of pre-cut panel



CARATTERISTICHE TIPICHE DELLE PELLI / TYPICAL CHARACTERISTICS OF THE LEATHERS

- Leggero doppio tono / *Light double tone*
- Leggero effetto pull-up con variazione di colore / *Light pull-up effect with color variation*
- Effetto Vintage / *Distressed effect*
- Morso d' insetto / *Insect Bite*
- Bulbo / *Hair pore*
- Spinatura / *Scar*

CARTELLA COLORI

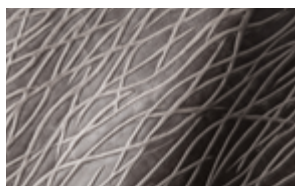
COLOUR PALETTE



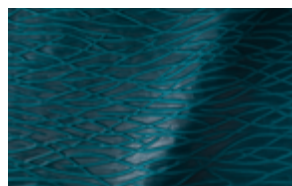
st. cristobal



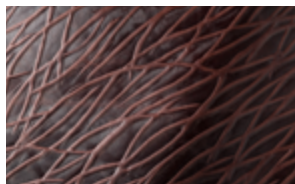
light purple



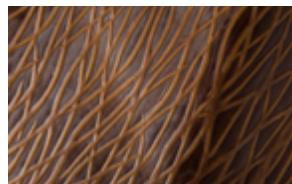
fango



smeraldo



burgundy



old america ranch