

# ELICA COLLECTION



La geometria elicoidale di questa stampa imprime suggestivi movimenti alle superfici, valorizzando la lucentezza del pellame adottato e creando affascinanti riflessi tridimensionali. Elica è stampata su Star, una pelle pieno fiore lavorata con trattamenti vegetalizzati e con una rifinitura in pura anilina che ne esaltano le tipiche caratteristiche naturali.

*The helicoidal geometry of Elica gives dramatic movements to surfaces, enhancing the natural shine of leather, and adding charming tridimensional shading effects. Elica is embossed on Star, a luxurious full grain, transparent leather characterised by a light organic finish and a beautiful vintage look.*

## SPECIFICHE TECNICHE / SPECIFICATIONS

---

### Origine / Origin

Pelli fresche di origine europea, conciate e lavorate con processi sostenibili in rispetto dell'ambiente / Raw hides of European origin, tanned and processed with sustainable processes in respect of the environment.

---

### Finitura / Finish

Semi Anilina / Semi Aniline

---

### Dimensione / Size

60x120 cm / 23.6"x47.2"

---

### Spessore / Thickness:

1,1 / 1,2 mm

---

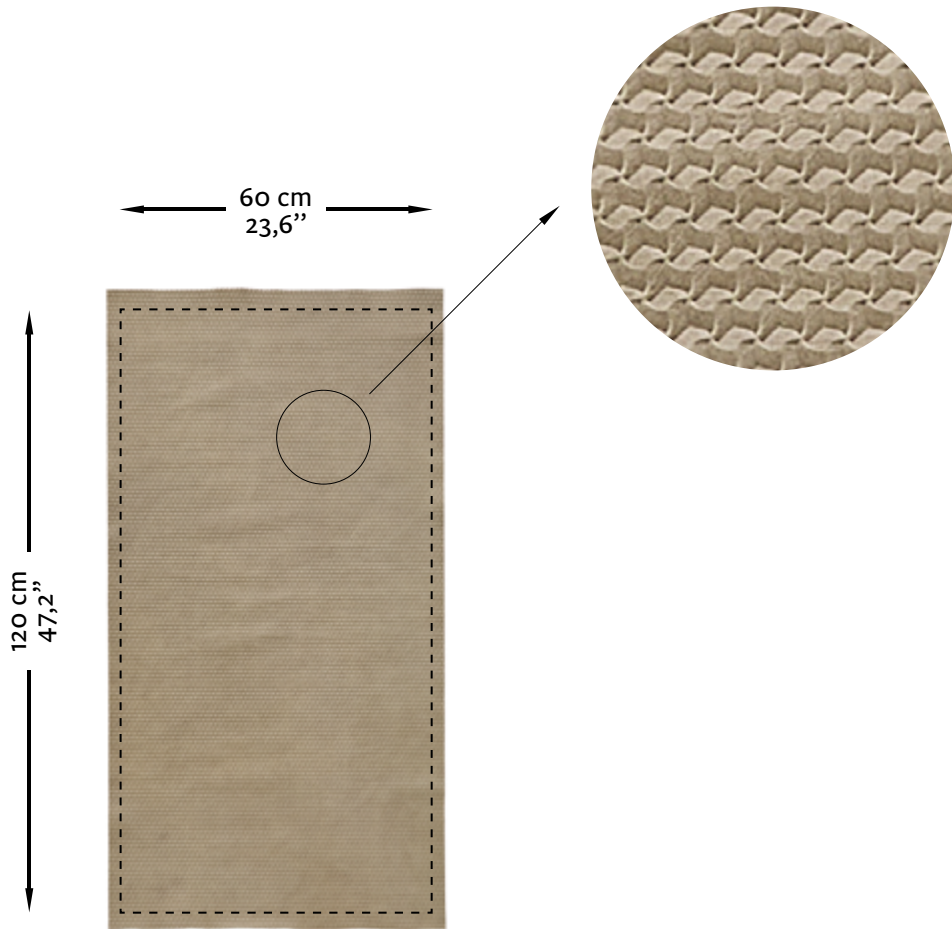
### Applicazioni / Applications

residenziale, hospitality, contract, aviazione, navale / residential, hospitality, contract, aviation, marine.

studioart

LEATHER INTERIORS  
www.studioart.it  
MADE IN ITALY

Esempio di pannello pretagliato  
*Example of pre-cut panel*

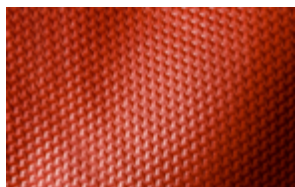


**CARATTERISTICHE TIPICHE DELLE PELLI / TYPICAL CHARACTERISTICS OF THE LEATHERS**

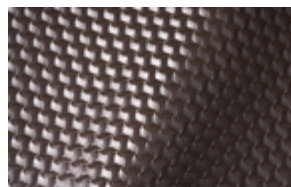
- Ruga / *Wrinkle*
- Spinatura / *Scar*
- Morso d' insetto / *Insect Bite*
- Poro / *Pore*
- Leggero doppio tono / *light double tone*

# CARTELLA COLORI

## COLOUR PALETTE



arancio



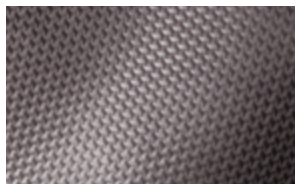
amaro



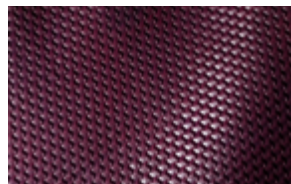
taupe



antilope



polombe



merlot