

CITY COLLECTION



City si distingue per le sue elevate qualità tecniche, che la rendono ideale per ogni tipologia d'arredo. Disponibile in un'ampia gamma di colori, City è una pelle realizzata con pelli bovine selezionate, tinte con coloranti all'anilina e rifinite con prodotti in soluzione acquosa.

City garantisce ottima solidità alla luce e all'usura, grazie a speciali trattamenti con sostanze protettive. City è un articolo che è possibile pulire con soluzioni igienizzanti a base di ipoclorito di sodio (Amuchina MED, Amukine MED, Alcavis 50).

City presents outstanding technical qualities which make it the ideal choice for all kinds of interiors. Available in a wide range of colours, City is a leather made from carefully selected cowhides which have been aniline-dyed and finished with water-soluble products. City guarantees excellent resistance to light and wear, thanks to special treatments with protective substances. City is a leather that can be sanitised and cleaned with sodium hypochlorite sanitising solutions (Amuchina MED, Amukine MED, Alcavis 50).

SPECIFICHE TECNICHE / SPECIFICATIONS

Origine / Origin

Pelli fresche di origine europea, conciate e lavorate con processi sostenibili in rispetto dell'ambiente / *Raw hides of European origin, tanned and processed with sustainable processes in respect of the environment.*

Finitura / Finish

Mezzo fiore uniformato / *Corrected grain*

Dimensione / Size

± 4,5 m² ± 50 sq. ft.

Spessore / Thickness:

0,9 / 1,0 mm

Applicazioni / Applications

residenziale, hospitality, contract, aviazione, navale / *residential, hospitality, contract, aviation, marine.*

studioart

LEATHER INTERIORS
www.studioart.it
MADE IN ITALY

Certificazioni / Certifications

Test	Metodo di prova <i>Test Method</i>	Unità di misura <i>Measurement unit</i>	Risultato <i>Result</i>
Resistenza alla trazione <i>Tear Strength</i>	UNI EN ISO 3377-1	N	> 20N
Solidità del colore allo strofinio-Secco 500 cicli <i>Colour fastness to rubbing-Dry 500 Cycles</i>	UNI EN ISO 11640	/	≥ 4
Solidità del colore allo strofinio-Umido 250 cicli <i>Colour fastness to rubbing-Wet 250 Cycles</i>	UNI EN ISO 11640	/	≥ 3/4
Resistenza alle flessioni-Secco 50.000 cicli <i>Flexing endurance-Dry 50.000 Cycles</i>	UNI EN ISO 5402-1	/	Nessun danno <i>No damage</i>
Resistenza alle flessioni-Umido 20.000 cicli <i>Flexing endurance-Wet 20.000 Cycles</i>	UNI EN ISO 5402-1	/	Nessun danno <i>No damage</i>

Altre certificazioni per ignifugo, aviazione e nautica disponibili su richiesta.
Other FR, aviation and marine certifications available upon request.

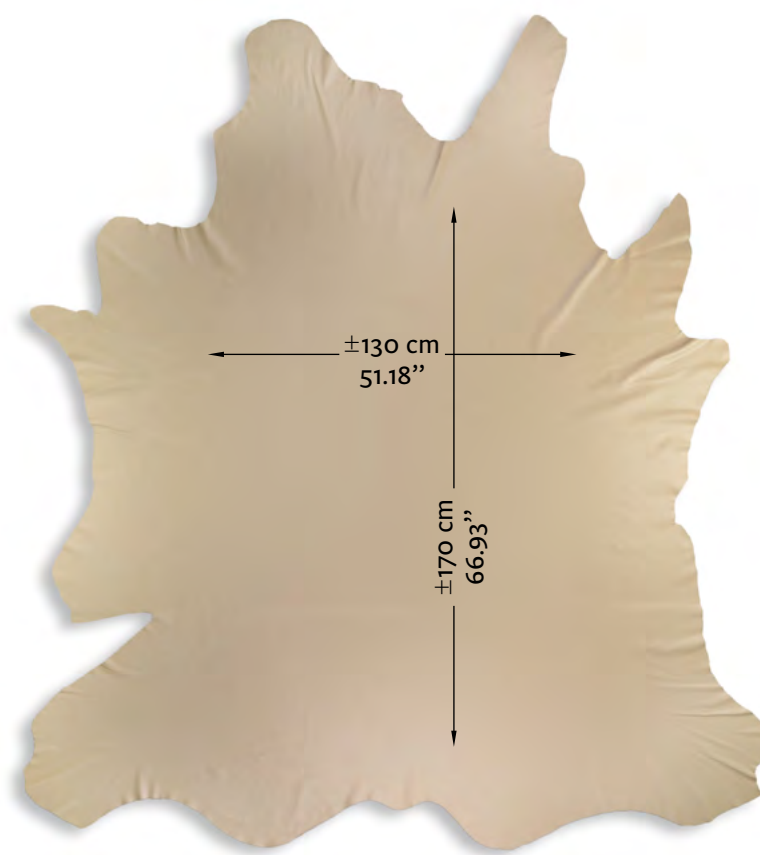
CURA E MANUTENZIONE

A differenza delle Aniline, queste pelli vengono rifinite con un leggero colorante protettivo, che garantisce una resistenza maggiore a macchie e usura. Pur essendo più resistente, si consigliano gli stessi accorgimenti dell'anilina.

CARE AND MAINTENANCE

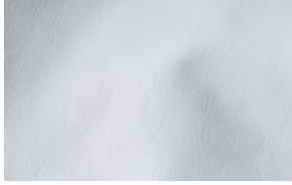
Differently from pure anilines, these leathers are finished with a light protective color that guarantees more resistance to stain and use. However, we recommend the same care and maintenance of anilines.

Esempio di area utilizzabile in una pelle
Example of usable area



CARTELLA COLORI

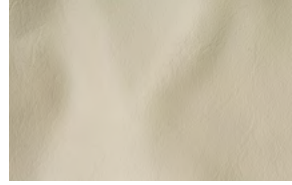
COLOUR PALETTE



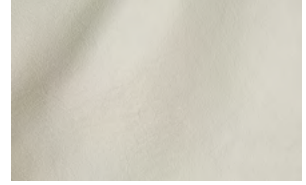
bianco ottico



greige



burro



white



mokaccino



sand stone



oyster



shell



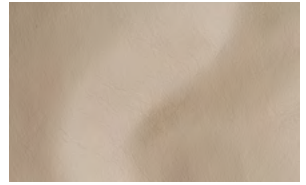
marmo



pastorius



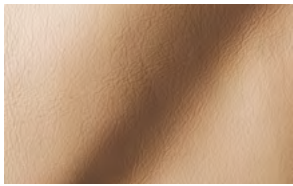
polvere



cachemire



grisrose



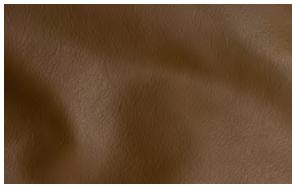
fard



pancake



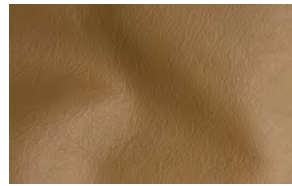
cipria



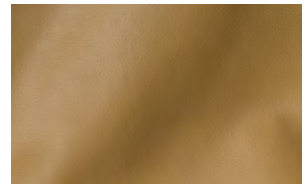
terra



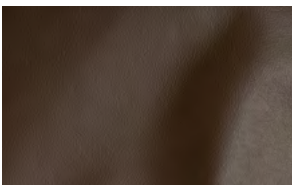
camel



walnut



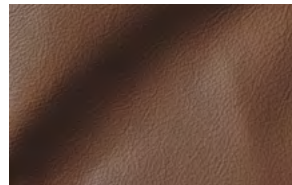
sand



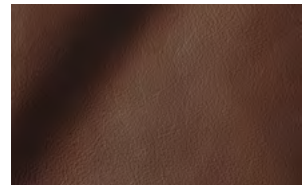
ebano



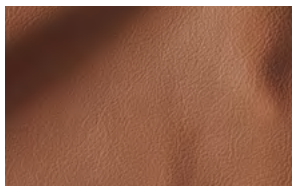
dk brown



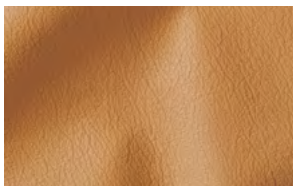
cognac



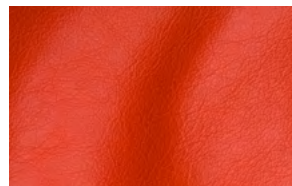
caramel



mandorla



crema



samba



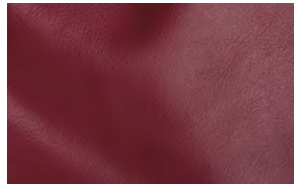
zucca



panama



lipstick



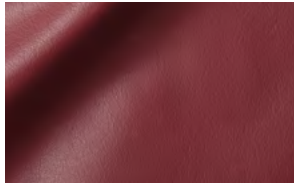
cocò



campari



autunno



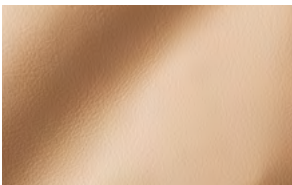
merlot



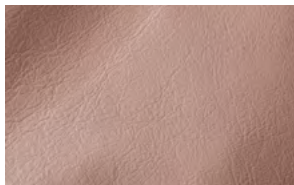
bordeaux



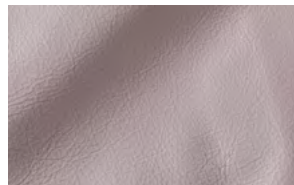
purple



albicocca



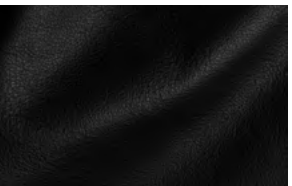
rosa inglese



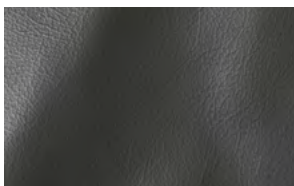
peonia



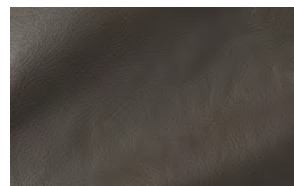
violette



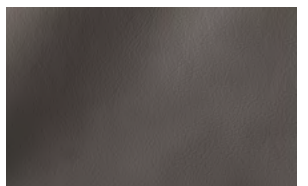
black



dark grey



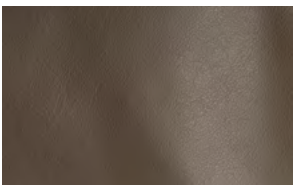
grisvert



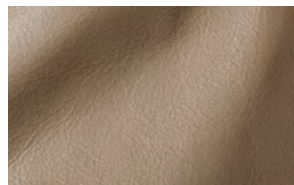
mouse



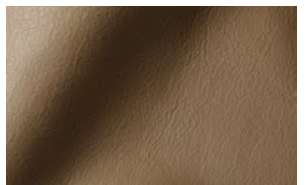
voronof



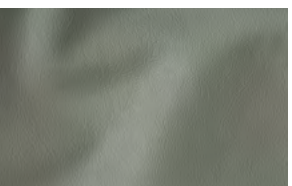
cenere



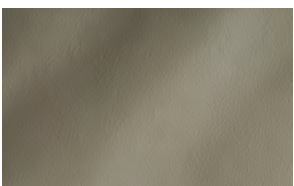
atmosfera



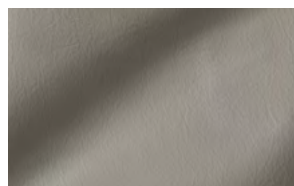
stone



ossipof



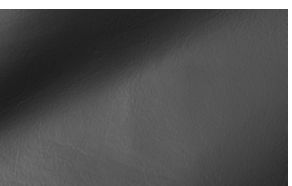
storm



light grey



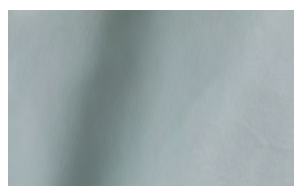
nuvola



grafite



sky



aria



cielo



navy



iceberg



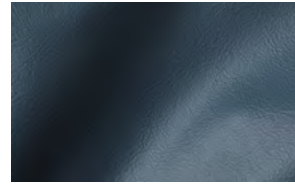
blu magia



blu elettrico



jeans



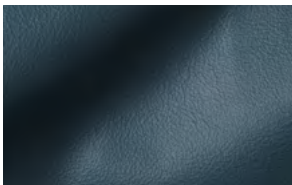
ginepro



boeing



fiocco



ottanio



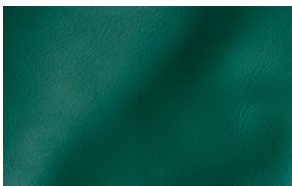
petrolio



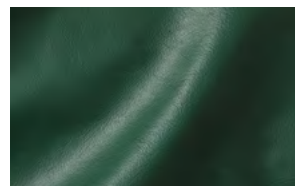
atlantico



gelice



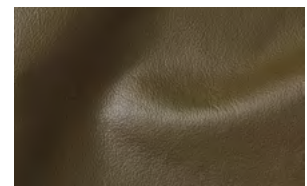
scarabeo



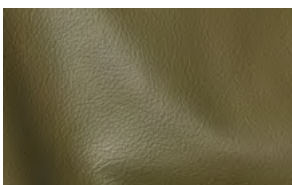
college



bosco



mimetico



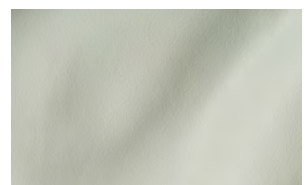
muschio



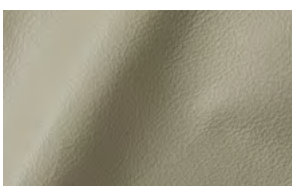
tundra



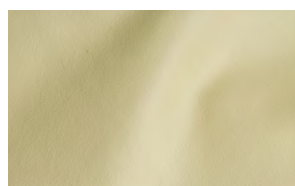
mela



edelweiss



geyser



old ice



carlos



acid green



minerale



zabaione



yellow



creme caramel