

BISANZIO COLLECTION



L'elegante geometria esagonale di Bisanzio è ideale per decorare gli interni con gusto e distinzione. Gli effetti tridimensionali creati dalla stampa valorizzano la naturale morbidezza della pelle, evidenziandone le tonalità uniche che si esaltano nel tempo. Bisanzio è stampata su pelli Waternatural, caratterizzate per la loro straordinaria morbidezza, trasparenza e naturalezza.

Bisanzio's elegant hexagonal geometric design is ideal to decorate luxurious settings with refined taste. The embossed pattern creates a beautiful three-dimensional effect that enhances the natural suppleness of leather and its unique tonal shades. Bisanzio is embossed on Waternatural leather, outstanding in suppleness, transparency and feel.

SPECIFICHE TECNICHE / SPECIFICATIONS

Origine / Origin

Pelli fresche di origine europea, conciate e lavorate con processi sostenibili in rispetto dell'ambiente / Raw hides of European origin, tanned and processed with sustainable processes in respect of the environment.

Finitura / Finish

Pura Anilina Idro-Olio Repellente / Water-Oil Repellent Pure Aniline

Dimensione / Size

60x120 cm / 23.6"x47.2"

Spessore / Thickness:

1,0 / 1,1 mm

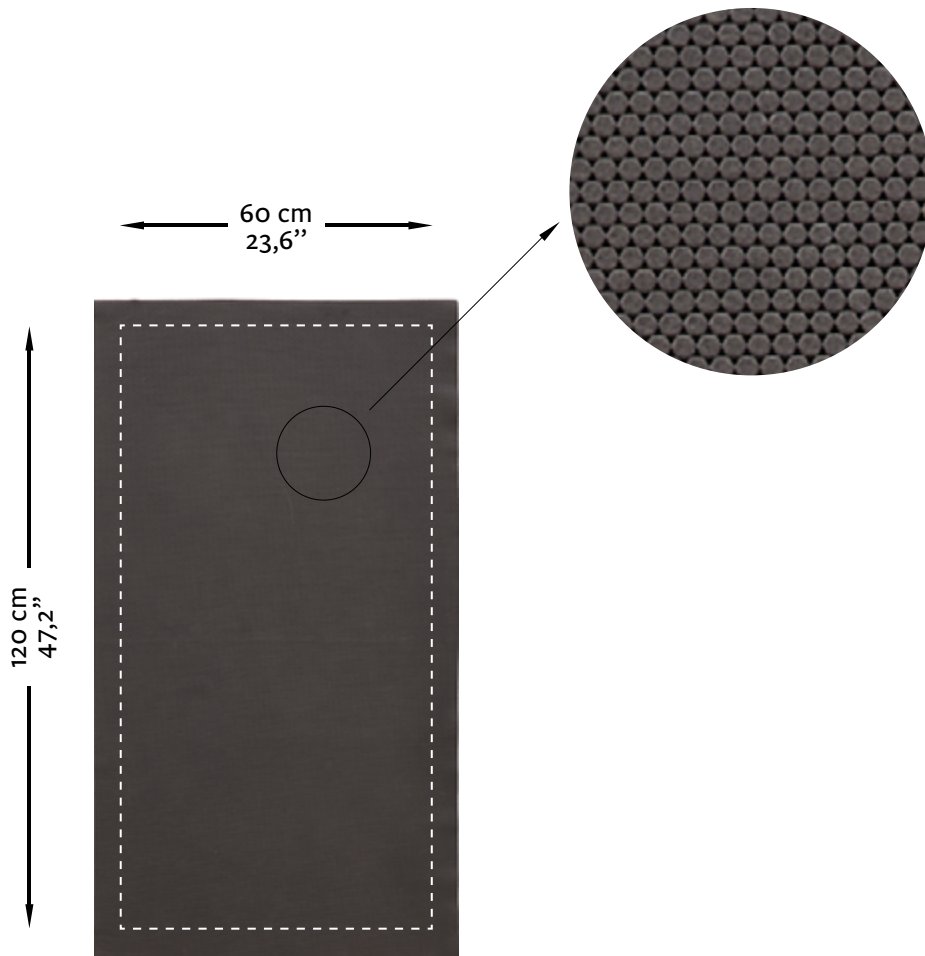
Applicazioni / Applications

residenziale, hospitality, contract, aviazione, navale / residential, hospitality, contract, aviation, marine.

studioart

LEATHER INTERIORS
www.studioart.it
MADE IN ITALY

Esempio di pannello pretagliato
Example of pre-cut panel



CARATTERISTICHE TIPICHE DELLE PELLI / TYPICAL CHARACTERISTICS OF THE LEATHERS

- Cicatrice / *Scar*
- Vena / *Vein*
- Effetto scrivenza / *writing-effect*

CARTELLA COLORI

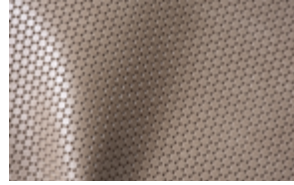
COLOUR PALETTE



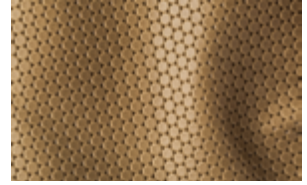
greige



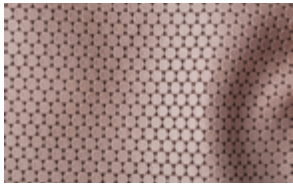
ivory



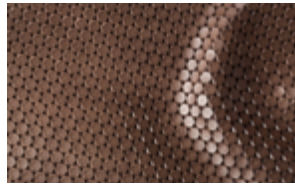
aglio



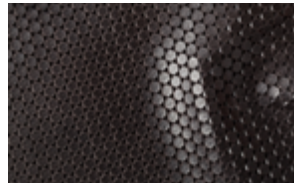
cream



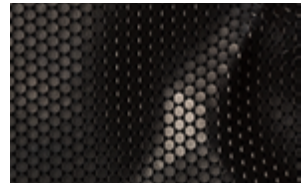
pearl



slate



dark ashe



black